

**95 Glynde Avenue N  
Burnaby, BC**



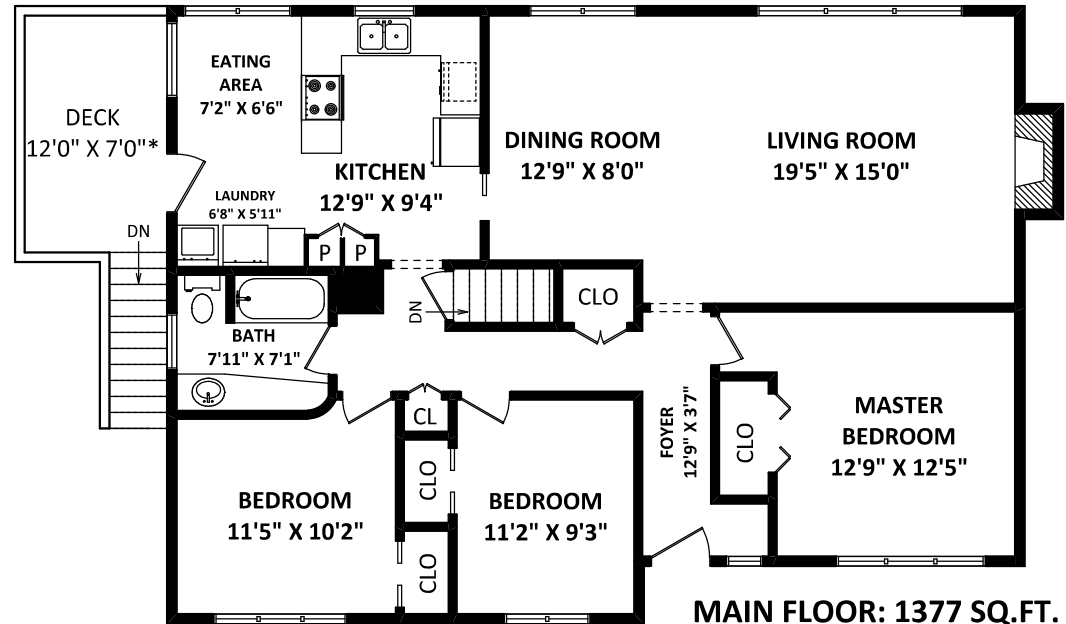
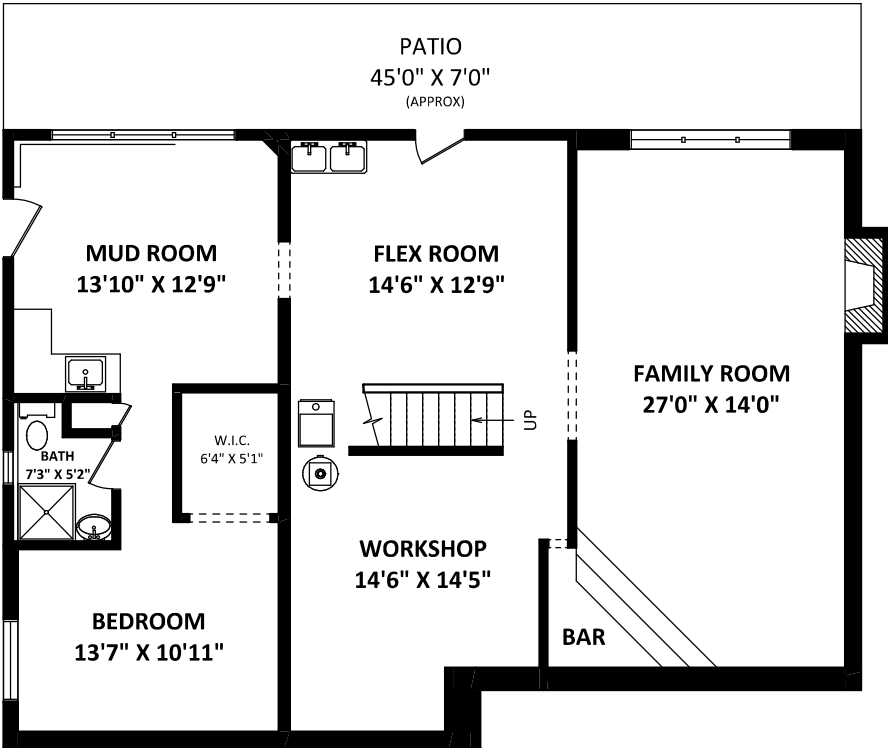
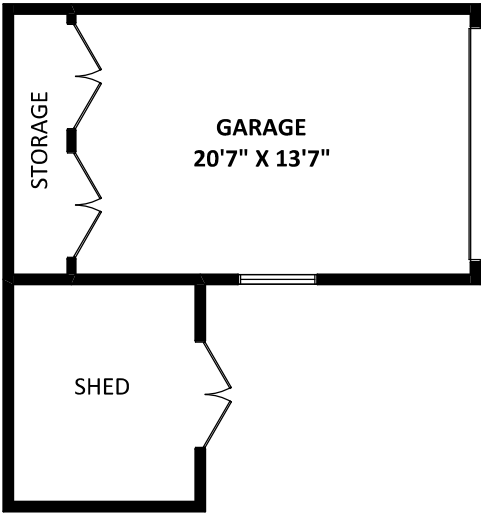
**GEOFF JARMAN**  
Personal Real Estate Corporation

**Sutton Group West Coast**  
Phone: (604) 415-9800  
Cell: (604) 313-7280  
gjarman@sutton.com  
jarmanrealestate.com

**TOTAL FLOOR AREA: 2754 SQ.FT.**  
FINISHED AREA(S): 2313 SQ.FT.  
UNFINISHED AREA(S): 441 SQ.FT.

**OTHER AREA(S)**

GARAGE: 362 SQ.FT.  
DECK: 105 SQ.FT.\*  
SHED: 125 SQ.FT.\*  
PATIO: 295 SQ.F.\*



**MAIN FLOOR: 1377 SQ.FT.**

**LOWER FLOOR:**

FINISHED AREA: 936 SQ.FT.  
UNFINISHED AREA(S): 441 SQ.FT.



DISCLAIMERS:  
1. MEASUREMENTS ARE FOR PROMOTIONAL USE ONLY & ARE NOT INTENDED FOR CONSTRUCTION USE.  
2. ROOM DIMENSIONS ARE APPROXIMATE. MEASUREMENTS & CALCULATIONS FOR FINISHED AREAS ARE E&O INSURED.  
3. FINISHED AREAS ARE ENCLOSED AREAS IN A HOUSE THAT ARE SUITABLE FOR YEAR-ROUND USE, EMBODYING WALLS, FLOORS, AND CEILINGS THAT ARE SIMILAR TO THE REST OF THE HOUSE. (ANSI Z765-2013)  
4. FOR DETACHED SINGLE-FAMILY HOUSES, THE FINISHED SQUARE FOOTAGE OF EACH LEVEL IS CALCULATED TO THE EXTERIOR FINISHED SURFACE OF THE OUTSIDE WALLS. (ANSI Z765-2013)  
\* ANY MEASUREMENTS WITH AN ASTERISK (\*) OR (APPROX) ARE APPROXIMATE AND FOR ILLUSTRATION PURPOSES ONLY AND ARE NOT E&O INSURED.

[AUGUST 25, 2020]



TEL: 604-575-1244  
www.seevirtual360.com