

# 203 5262 Oakmount Cres.

**SUNNY, north west CORNER suite located in the popular St. Andrews at the Oaklands!**

**2 bedroom, + 2 bathroom, 1,030 SF suite that feels more like a house!**

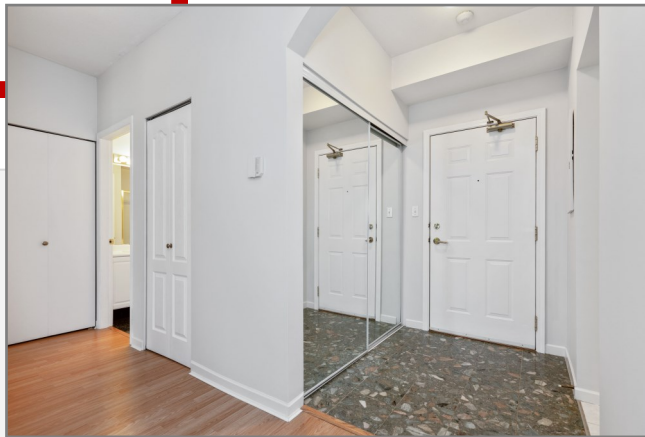
**A quiet & private large 17'2 x 14'3 elevated brick patio looking into trees and green space of Deer Lake Parklands.**

VIEW of the North Shore mountains to the North! Most suites in this building have small decks or patios!

North-West facing unit. Marble flooring in foyer & ensuite. Laminate flooring throughout! New interior paint. Deluxe ensuite with oversized soaker tub, separate glass shower, double sinks, brass fixtures, & recessed pot lighting. Suite is bright with large windows & 9' ceilings! Secure underground parking on same level as suite.

Amenities include party room, gym, bike room, hobby room, guest suite & 2 EV charging stations. Steps to Deer Lark, 5 mins to Metrotown, 7 mins to Metrotown SkyTrain & Highgate shopping, 11 mins to Brentwood. 1 parking & 1 full size locker included.

Convenient location, 1 block from transit, 3 blocks to Marlborough Elem.



**GEORGE JARMAN**  
PERSONAL REAL ESTATE CORPORATION

**Sutton WestCoast Realty**  
**Cell 604 313 7280**

Email: [info@jarmanrealestate.com](mailto:info@jarmanrealestate.com)  
Website: [jarmanrealestate.com](http://jarmanrealestate.com)

# 203 5262 Oakmount Cres.



**GEORGE JARMAN**  
PERSONAL REAL ESTATE CORPORATION

Sutton WestCoast Realty  
Call 604 313 7280

Email: [info@jarmanrealestate.com](mailto:info@jarmanrealestate.com)  
Website: [jarmanrealestate.com](http://jarmanrealestate.com)

The enclosed information while deemed to be correct, is not guaranteed & should be verified by the Purchaser if deemed important.  
This communication is not intended to cause or induce breach of an existing agency agreement.



# 203 5262 Oakmount Cres.

## Local Schools!

\*Information from SD#41 school locator. Please verify if important

**Elementary**  
K - 7 Marlborough Elementary

**Secondary**  
8 - 12 Burnaby Central Sec.

**Early French Immersion**  
K - 7 Marlborough Elementary

**Late French Immersion**  
6 - 7 Marlborough Elementary

**Secondary French Immersion**  
8 - 12 Moscrop Secondary

**Post Secondary**  
SFU, BCIT & Douglas College

## What's Nearby

Real Canadian Superstore, T & T Supermarket, Save-on-Foods, Assi Supermarket, & others

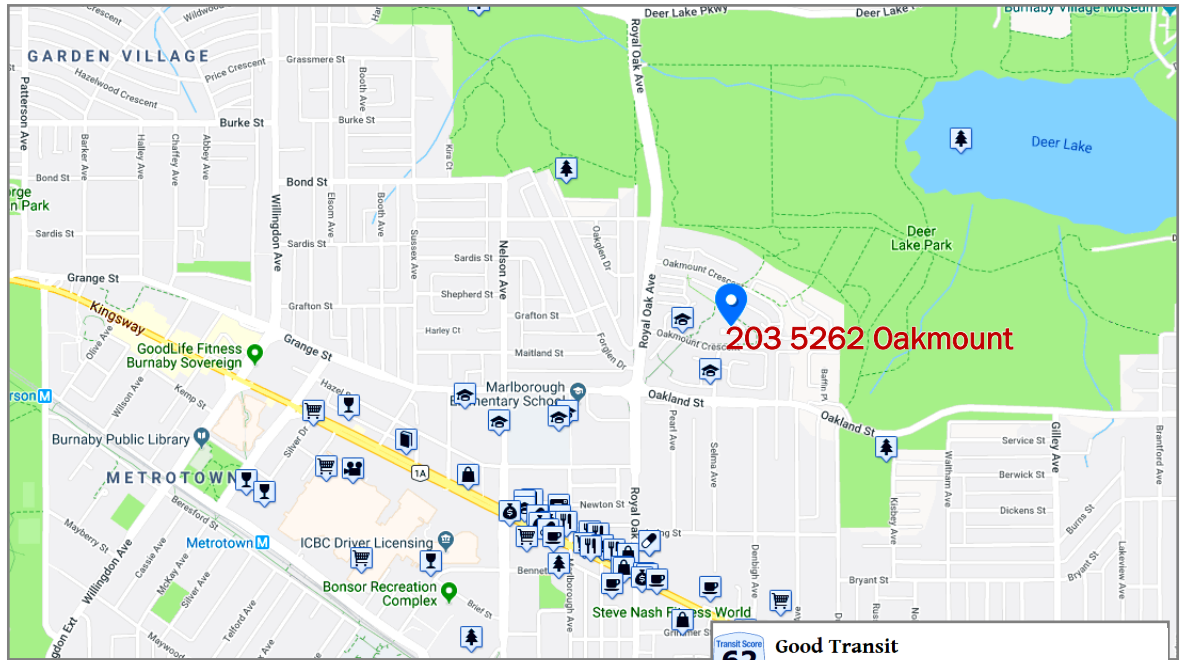
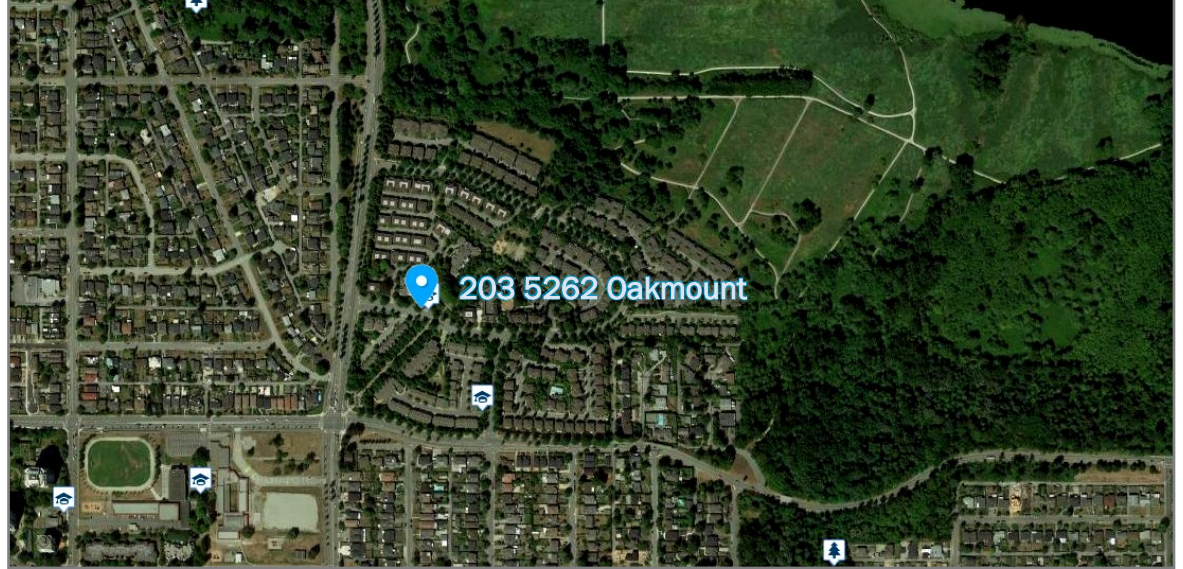
Lamb Bistro, C Fruit Life, Jang Mo Jib, Tian Shi Fu Hunan Restaurant, Sushi Oyama & several others!

Joe's Table, OneZo Tapioca, Boba Boy, Chatime Burnaby, Starbucks, & others

Bonsor Community Centre, Burnaby public Library, Nikkei Museum and Cultural Centre, Cineplex Metropolis, Shadbolt Centre and PNE

Metrotown, Highgate Mall, Old Orchard Shopping Centre, & Crystal Mall

Central Park, Burnaby Village Museum, Deer Lake Park & Others



### 5262 Oakmount Crescent

Burnaby, British Columbia, V5H 4R7

Commute to **Downtown Burnaby**

15 min 40 min 31 min 60+ min View Routes

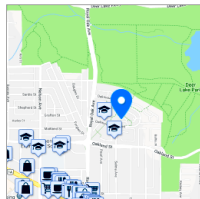
Favorite Map Nearby Apartments

More about 5262 Oakmount Crescent

**Walk Score 58**  
Somewhat Walkable  
Some errands can be accomplished on foot.

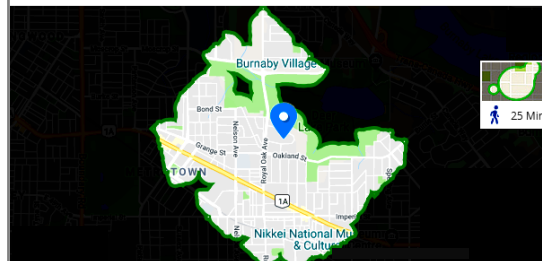
**Transit Score 62**  
Good Transit  
Many nearby public transportation options.

**Bike Score 40**  
Somewhat Bikeable



### Travel Time Map

Explore how far you can travel by car, bus, bike and foot from 5262 Oakmount Crescent.



### Good Transit

5262 Oakmount Crescent has good transit which means many nearby public transportation options. Car sharing is available from Zipcar.

Rail Lines:	Distance
Expo Line	1.3 km
Bus Lines:	Distance
144 SFU/Metrotown Station	0.2 km
110 Lougheed Station/Metr...	0.7 km
N19 Downtown/Surrey Cent...	0.8 km
112 Edmonds Station/New ...	0.8 km
119 Edmonds Station/Metr...	0.8 km



PERSONAL REAL ESTATE CORPORATION

Sutton WestCoast Realty  
Call 604 313 7280

Email: info@jarmanrealestate.com  
Website: jarmanrealestate.com

The enclosed information while deemed to be correct, is not guaranteed & should be verified by the Purchaser if deemed important. This communication is not intended to cause or induce breach of an existing agency agreement.