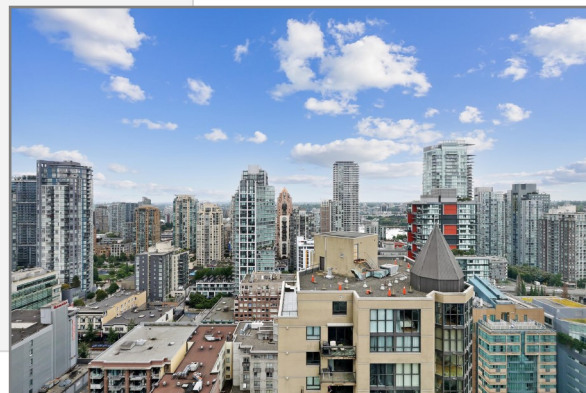


# 2606 1283 Howe Street

**BRIGHT** New unit on the 26th floor of the Tate!  
**CORNER** unit with city and peekaboo water VIEWS!

- ◆ 2 bedrooms + den + solarium
  - ◆ 2 bathrooms
  - ◆ 834 SF
  - ◆ Amazing VIEWS facing East, South and West!
- 
- ◆ Floor-to-ceiling windows.
  - ◆ Laminate flooring in living areas and carpeted bedrooms.
  - ◆ Bright and open kitchen featuring:
    - ◆ Eggersman European cabinetry
    - ◆ Quartz counters & Kohler fixtures
    - ◆ Miele gas cooktop
    - ◆ Miele oven and hood fan
    - ◆ Blomberg fridge and dishwasher
    - ◆ Mosaic backsplash
  - ◆ Bathroom featuring:
    - ◆ Eggersman cabinetry
    - ◆ Quartz counters & Kohler fixtures
    - ◆ Porcelain & Marble tiles and surrounds
  - ◆ Strata fees includes gas and hot water!
  - ◆ 1 parking and 1 storage locker
  - ◆ Great amenities include gym, yoga studio, theatre, lounge, party room, meeting room and games room
  - ◆ Superb walk score of 96!
  - ◆ Unbeatable location steps to Yaletown and minutes to Skytrain, Seawall, David Lam Park, Granville Island, St. Paul's Hospital!



**GE OFF JARMAN**  
PERSONAL REAL ESTATE CORPORATION

Sutton West Coast Realty  
Cell 604 313 7280

Email: [info@jarmanrealestate.com](mailto:info@jarmanrealestate.com)  
Website: [jarmanrealestate.com](http://jarmanrealestate.com)

# 2606 1283 Howe Street



**GEORGE JARMAN**  
PERSONAL REAL ESTATE CORPORATION

Sutton West Coast Realty  
Cell 604 313 7280

Email: [info@jarmanrealestate.com](mailto:info@jarmanrealestate.com)  
Website: [jarmanrealestate.com](http://jarmanrealestate.com)

The enclosed information while deemed to be correct, is not guaranteed & should be verified by the Purchaser if deemed important.  
This communication is not intended to cause or induce breach of an existing agency agreement.

# 2606 1283 Howe Street



**GE OFF JARMAN**  
PERSONAL REAL ESTATE CORPORATION

Sutton West Coast Realty  
Cell 604 313 7280  
Email: [info@jarmanrealestate.com](mailto:info@jarmanrealestate.com)  
Website: [jarmanrealestate.com](http://jarmanrealestate.com)

The enclosed information while deemed to be correct, is not guaranteed & should be verified by the Purchaser if deemed important.  
This communication is not intended to cause or induce breach of an existing agency agreement.

# 2606 1283 Howe Street

## Local Schools!

\*Information from SD#39 school locator. Please verify if important

### Elementary

K - 7 Elsie Roy Elementary

### Secondary

8 - 12 King George Secondary

### French Immersion

K - 7 Henry Hudson Elementary

### Secondary French Immersion

8 - 12 Kitsilano Secondary

### Post Secondary

SFU, UBC, University Canada West, New York Institute of Technology, & others

## What's Nearby

Nesters Market, Whole Foods Market, IGA, T&T Supermarket, H-Mart, Granville Island & others

Street shopping on Granville St, Robson St & in Yaletown, Pacific Centre, Hudson Mall, & others

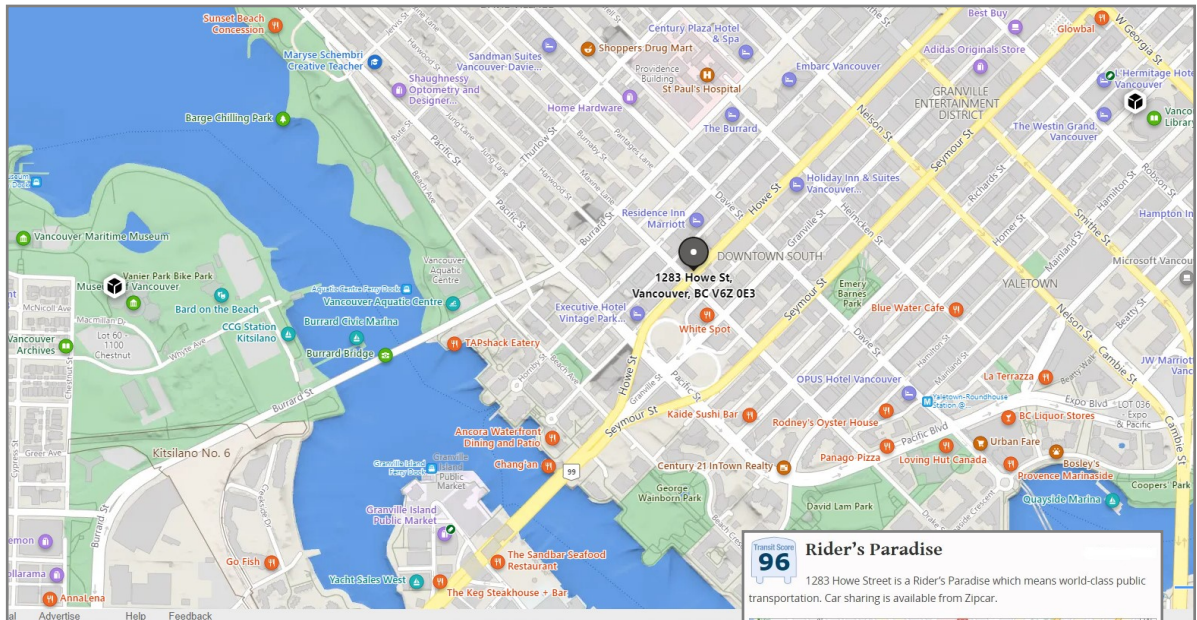
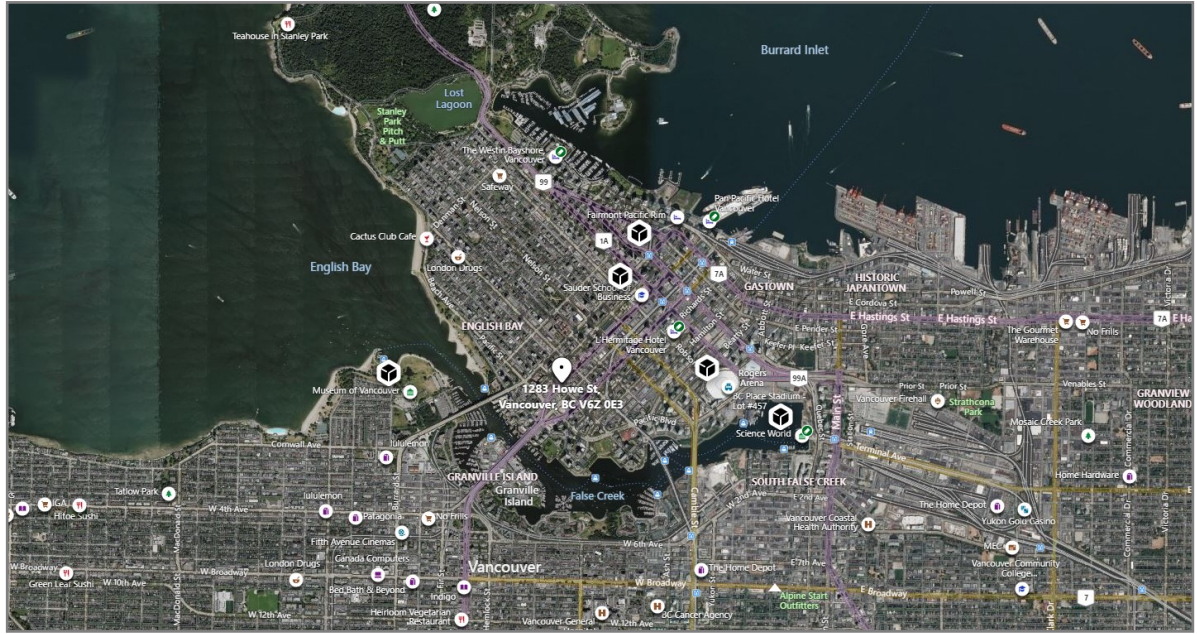
White Spot, JOEY Burrard, Italian Kitchen, Hawksworth, Sandbar Restaurant, Giardino Restaurant, Glowbal, Earls, Pacifico Pizzeria, Nuba, & so many others!

Breka Bakery, Café Artigiano, New Amsterdam Café, Matchstick, Mira Café, Prado Café, Nemesis Coffee & others

Roundhouse Community Centre, Vancouver Public Library, Vancouver Aquatic Centre, & others.

Granville St Entertainment District, Orpheum, QE & Vancouver Playhouse Theatres, Rogers Arena, BC Place, & Others!

Emery Barnes Park, George Wainborn & David Lam Parks, English Bay Beach, Coopers' Park, & many others.



## 1283 Howe Street

Downtown, Vancouver, V6Z 1C1

Commute to **Downtown Vancouver**

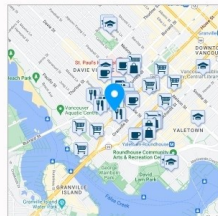
2 min 8 min 4 min 15 min View Routes

Favorite Map Nearby Apartments

**Walk Score 96**  
Walker's Paradise  
Daily errands do not require a car.

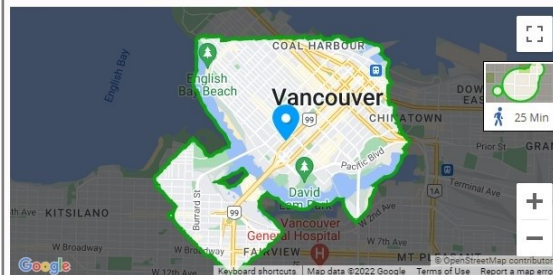
**Transit Score 96**  
Rider's Paradise  
World-class public transportation.

**Bike Score 91**  
Biker's Paradise  
Daily errands can be accomplished on a bike.



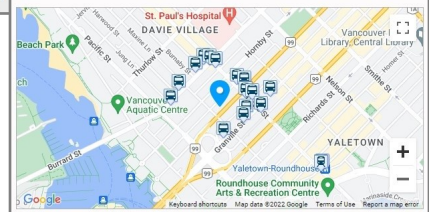
## Travel Time Map

Explore how far you can travel by car, bus, bike and foot from 1283 Howe Street.



## Rider's Paradise

1283 Howe Street is a Rider's Paradise which means world-class public transportation. Car sharing is available from Zipcar.



Rail lines:	Distance	Line	Distance
Canada Line	0.6 km	980 CANADA LINE SkyTrain	0.6 km
Expo Line	1.1 km		

Bus lines:	Distance	Line	Distance
006 Davie/Downtown	0.1 km	006 DAVIE/DOWNTOWN	0.1 km
C23 YALETOWN/DAVIE/MAL...	0.1 km	004 POWELL/DOWNTOWN/UBC	0.1 km
010 Granville/Downtown	0.1 km	016 29th Avenue Station/Ar...	0.1 km
007 Nanaimo Station/Dunbar	0.1 km	050 Waterfront Station/Fals...	0.1 km
014 Hastings/UBC	0.1 km	N9 Downtown/Lougheed St...	0.1 km

# GEOFF JARMAN

PERSONAL REAL ESTATE CORPORATION

Sutton West Coast Realty  
Cell 604 313 7280

Email: info@jarmanrealestate.com  
Website: jarmanrealestate.com

The enclosed information while deemed to be correct, is not guaranteed & should be verified by the Purchaser if deemed important. This communication is not intended to cause or induce breach of an existing agency agreement.